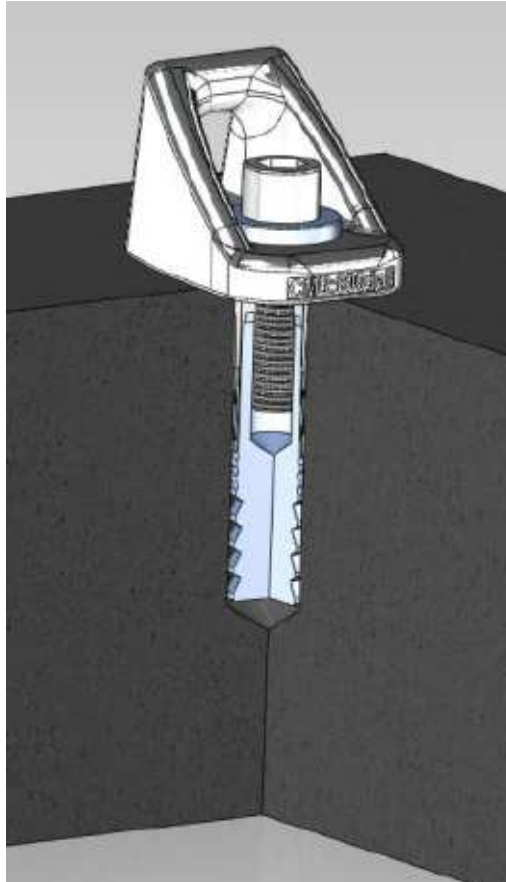


BEDDING ANCHORS WITH SHOES



- ❑ New chemical fixing with collars
- ❑ Attachments for cable support and plate attachment (access platform, pit edge vaulting table, etc.)
- ❑ Rapid installation in finished floors
- ❑ Avoids masonry work
- ❑ European technical approval issued on request
- ❑ Guaranteed anchor resistance
- ❑ Fast setting and high strength
- ❑ Used for all types of cable systems (short or standard cable system)

TECHNICAL FEATURES

- ❑ Anchoring shoe for attaching cables
- ❑ Thread sleeve M12
- ❑ High strength security screws
- ❑ Drying time: 3 hours and a half on dry concrete

Four models available

- ❑ **Ref. 2004** - Pack of 4 anchors
- ❑ **Ref. 2006** - Pack of 6 anchors
- ❑ **Ref. 2016** - Pack of 16 anchors
- ❑ **Ref. 2020** - Pack of 2 anchors

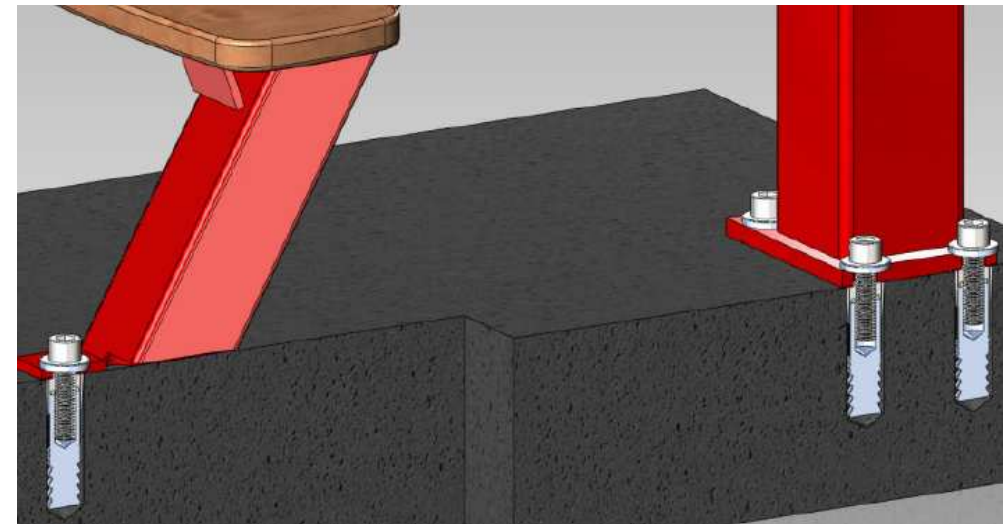


Plate attachment



=> *Can only be used in good quality concrete slabs, depth 10 cm for Ref. 2004, Ref. 2006, Ref. 2016 and Ref. 2020 and 14 cm mini- mum for Ref. 2000 and slab strength of 23 MPA (megapascals).*